

# PARISH NEWSLETTER

May 2018

for the villages of Aldwark, Alne, Flawith,  
Tholthorpe, Tollerton and Youlton

---

There is now a vacancy for the Priest in Charge of the Alne Parish, although Carmel Gittens is still with us. She can be contacted by telephone on 01347 833437 or by e-mail on [carmel-gittens@live.co.uk](mailto:carmel-gittens@live.co.uk). However please try contacting the church wardens as the first point of contact – a full list of wardens is provided on page 14 of this Parish Newsletter.



## A LETTER FROM YOUR CURATE

**TO GOD BE THE GLORY GREAT THINGS HE HATH DONE!**

As I write this letter to you all I am reflecting on many things. The wonderful redemption of Christ's sacrifice for us, which we have just celebrated in our Easter services. The joy of new birth brought home by the songs of the birds, the new growth of nature in all its glory, and personally as I rejoice in the birth of a beautiful new grandson. New beginnings abound too as I move from the house in Holly Garth to the parsonage at Alne, and as I am Priested at York Minster on 27<sup>th</sup> May at 10.00a.m. It would be wonderful if you could come!

It does not seem five years since we moved here from West Lancashire, the time has flown aided by the warm welcome and love we have received from so many of you all. We have certainly taken you into our hearts as you have taken us into yours...Thank you! My first post here as you know was to serve the six parishes as your licensed Reader, but God had other plans and my call to Ordained ministry became even stronger as time went on. Since training and being made Deacon I have been delighted to be able to baptise, and this year I have baptised 12 new Christians into the faith. Following Ordination to Priest in May I will be able to consecrate at Eucharistic services and to marry. Already I have three weddings booked in! The sacramental side of this ministry is so precious and such a privilege to be able to serve you all fully in joyous times and in sadness too.

Sometimes after a service, people will come and say how wonderful the service was, or how the sermon has really touched them, but we must always remember that it is not my ministry but God's ministry. In all of our lives it is so easy to take the glory for things we have said or done but God does not want us to be self-congratulatory and proud. As Christians it is our duty to serve one another, with humility and love, not to seek personal accolades. So as we all continue in this wonderful community, and as I continue to serve all six church parishes to the best of my ability I am reminded that it is only by prayer and God's grace that these things are possible....To GOD be the glory.  
Be blessed.

Revd Carmel Gittens

Please note change of address and contact details for Revd. Carmel Gittens:

Monk Green House  
Main Street  
Alne  
YO61 1TB

T: 01347 833437  
E: [Carmel-gittens@live.co.uk](mailto:Carmel-gittens@live.co.uk)

# GodZone

Fun sessions for children age 3 - 13 years

Sunday mornings twice a month

For more info see our facebook page



@St Michael's Church Tollerton

## News from Alne Church

### Vacancy

When the new Vicar is appointed he/she will live in the new vicarage to be located in Brafferton. In the meantime the Revd Carmel Gittens and her husband, Billy, have moved into the vicarage in Alne. The advert for a new vicar has not yet been advertised - apparently the new appointment is being held up because a new vicarage in Brafferton has not been obtained.

### Church Restoration Project

The project group is facing cost rises but we are hopeful that the external work will proceed as planned in September. More planning is needed for the internal works, including the new heating system. We continue to seek grants to supplement those already pledged to the project, but more fundraising is essential. Gift Day money this year will be for the heating system.

### Gift Day & Coffee at the church – Tuesday 15<sup>th</sup> May 10.00a.m. to noon

We plan to hold our Coffee event on the same time as Gift Day.

## **Alne Street Fayre - Sunday 10<sup>th</sup> June**

As usual the church will be hosting a range of events including music, demonstrations, slide shows and guided tours. If anyone can spare an hour to help us at the church we will be most grateful (telephone Peter Cove – 838346).

## **Vera Bailey**

We are sorry to report that Vera Bailey died in Peterborough Hospital on Easter Saturday. Vera had celebrated her 100<sup>th</sup> birthday on 9<sup>th</sup> February. She had been a long time resident of Alne and we send our condolences to her family.

## **St. Mary's Church, Alne Gift Day**

**Tuesday, 15<sup>th</sup> May 2018 from 10.00a.m. at the Coffee Club meeting**

We don't use the old tortoise stoves to heat the Church any more but the present heating system is inefficient as were these stoves in Victorian times.

We thank you for your kindness in the past in helping to maintain the building with your generous gifts towards the Restoration Appeal, which is progressing well. We are now looking towards improving the interior of the Church and making it more welcoming and comfortable by installing an efficient and effective heating system with improved insulation more suitable for the 21<sup>st</sup> century.



Curate Reverend Carmel Gittens

Churchwardens Peter Cove & Carol Glen

**Village Hall News and Dates for your Diary**



**Pub Night Friday 4<sup>th</sup> May doors open 7.00p.m.**  
Summer pub night dates to follow....

**Spring Plant Sale Sunday 20<sup>th</sup> May: 10.00a.m. to 12 noon**

Lots of beautiful summer bedding plants as well as perennials and edibles. The plants are supplied by Brown's Nursery and also donated by our green fingered friends in the village. If you have any spare plants you would like to donate please drop them off at the Village Hall after 3.00p.m. on Saturday, 14<sup>th</sup> May. Refreshments and bacon butties will be available to give you the strength to carry home all your new plants.

**“Old Time Radio Show” Saturday 8<sup>th</sup> September**

Put the date in your diary now, more details to follow.

**New Year's Eve 2018**

Following the success of Christmas Eve and the Pub Nights in general, we have received a number of requests to do “something special” on New Year's Eve. This would be a ticket only event. If you have any ideas or feedback please let us know. In the meantime, put the date in your diary and watch this space.

**New Fitness Classes**

In September, Jenny Mace, who moved into the village last year, would like to start some day time fitness classes at the Village Hall. These will be aimed at different age groups and fitness levels and will be for both men and women. Jenny would love to receive your feedback and ideas regarding what type of exercise classes you would like to take part in at the Hall. You can get in touch with jenny at the following e-mail address: [jjgreaves3@yahoo.co.uk](mailto:jjgreaves3@yahoo.co.uk)

## **Refurbishment Update**

We are continuing with our ongoing program of refurbishment and improvements to the hall. We have new windows at the rear of the property and the old leaky guttering has now been replaced. We also have some smart new and comfortable furniture in the new meeting room. This room is ideal for groups to meet in a warm and comfortable environment. It has its own access and toilet facilities, independent from the rest of the Village Hall.

Next job – the painting of the window frames and doors, as soon as the weather allows.

**Thank you** for all your support, by attending events and hiring the Village Hall for parties etc. This provides the income to look after the Village Hall for future generations. You can check our webpage on [www.alnevillage.co.uk](http://www.alnevillage.co.uk) for more information on the Hall and upcoming events or follow us on Facebook. If you would like to be included on the e-mail distribution list (which is confidential) please let us know.

## **ALNE WI**

Alne WI is looking to enhance its current numbers. We are a small country WI, not all jam and Jerusalem. If you are interested, please come along and see what we get up to, we love having visitors. We have good speakers, the opportunity to engage in national campaigns (2017 was End Plastic Soup) and Federation events, ranging from craft to science. Our programme of events is on [www.alnevillage.co.uk](http://www.alnevillage.co.uk) but the main thing is meeting up with friends and having a good time, whilst doing something different.

More details from Joan at [a.baram@btinternet.com](mailto:a.baram@btinternet.com) or Pam on 838302.

## **ALNE VILLAGE SUMMER OUTING - Wednesday, 20<sup>th</sup> June 2018**

National Memorial Arboretum, Staffordshire (approx. 2 hrs journey) £20 per person - full details from Jean Teasdale. Coach pick-up in Easingwold, Alne & Tollerton. Tel: 01347 838431 or e-mail: [jeanteasdale48@gmail.com](mailto:jeanteasdale48@gmail.com)

## **Alne Street Fayre World War One Memories**

As part of the commemoration of 100 years since the Armistice, the Alne Street Fayre theme this year will be World War 1.

The tea rooms will give a nod to this theme and the competitions this year are also related to this, giving the children an opportunity to think about this important event.

We are looking to put together a display of memorabilia - this can be objects or items, or pictures, particularly if they are relevant to Alne and the surrounding area.

Obviously we cannot take responsibility for any items loaned for display so it may be that you would like to send us a picture or photocopy. If you can write some words to go alongside any items, that would be really helpful.

If you can let me have anything by Sunday, 3<sup>rd</sup> June at the latest, that would be great.

Many Thanks

Jo Hall

Orchard Close, Main Street, Alne YO61 1RT

On behalf of the Alne Street Fayre Committee

E: [jojogoodson@aol.com](mailto:jojogoodson@aol.com)

T: 07709798808

## **Restoration of the Alne verges – an update**

The new setts are now all in place, we are just awaiting topsoil and seeding, plus the laying of new tarmac on the road adjacent to the new setts. Dropped kerbs are also planned on either side of Mitchell Lane where it meets Main Street.

Alne Parish Council will not be settling the NYCC bill until the work is complete. If you are aware of any defects (loose setts etc.) please let the Parish Council know as soon as possible so these can be rectified before the contractors disappear. The easiest way to do this is through the Contact page of the Alne Village website [www.alnevillage.co.uk](http://www.alnevillage.co.uk), with a clear notification of what the defect is and exactly where it is situated.

### ***The Alne Annals* New Edition**

David Newton's *The Alne Annals* was first published in 2002 and was the first time that anyone had put together in one volume the various papers that had been published over the years in local and national papers, parish magazines, learned tomes, countless directories and, just as importantly, in private musings and recollections.

With the kind permission of the Newton family and the financial support of Alne Parish Council, a new edition has now been published and will become available in early May.

his new edition keeps to the same principle as the original but has added a lot more information from many different sources, being more than 60% larger than the original; it includes stories about life in Alne in the 1940s and 1950s, the old shops and post offices, the 1944 bomber crash, Alne station and the railway, the vicars of Alne, Alne Cricket Club, the schools and Village Hall, the War Weapons Committee and the Coronation Committee. It also features many old photos.

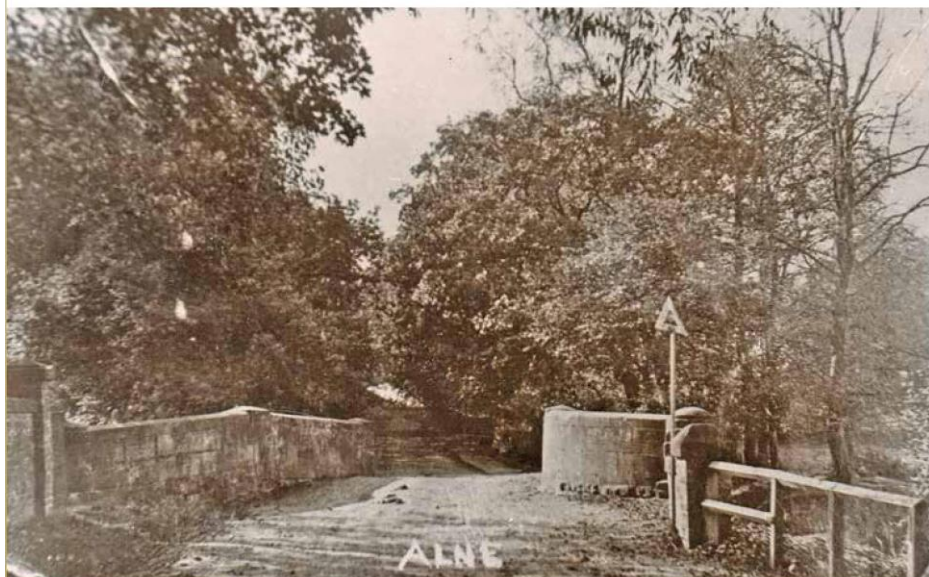
The book is not a history, it is not a chronology, but it is a collection of tales from many authors and publications from many sources. It thus forms a fascinating insight into the village and parish of Alne over the years.

Pre-publication orders can now be accepted and, as this is a limited print run, early action is recommended. The price is £10 (delivery is free in Alne and £3 elsewhere in the UK).

Cash or cheque (payable to Alne Parish Council) to Robert Brech at Alne Croft, Main Street, Alne, YO61 1TB or ring 838265 for online payment details.



# THE ALNE ANNALS



DAVID J NEWTON

*Republished and expanded by Robert Brech 2018*

# NEW TO ALNE — ALNE BOOT CAMP

STARTING SUNDAY 3rd JUNE



GET FIT AND HAVE FUN WITH SOME CIRCUIT TRAINING  
EVERY SUNDAY ON THE PLAYING FIELD  
8.30AM - 9.30AM

FUNCTIONAL FITNESS FOR EVERYONE

14+

FREE IN JUNE  
then just £4 per person

NO NEED TO BOOK - JUST COME ALONG

ANY QUESTIONS CONTACT ALICE  
07939214349

## **Tollerton Village Hall**

### **Car treasure hunt 2018**

The car treasure hunt was originally planned for 19<sup>th</sup> May, but due to a big wedding, it has been moved to **Sunday, 20<sup>th</sup> May 2018**.

Look out for Tollerton Village Hall events on Facebook.

### **Tollerton Mini Show**

You are all warmly invited to enter the mini show, which this year, will be held on **Sunday, 2<sup>nd</sup> September, from 1.00p.m, at The Black Horse pub**.

The event is purely to have fun and raise money, entertaining both young and old. After the 2017 show, £2,000 was donated equally between Parkinson's, Macmillan, Tollerton playing field and Yorkshire Air Ambulance.

All items entered for judging are subsequently auctioned off during the event.

This year's Mini Show is going to follow the same format as last, with beer, BBQ, bouncy castle, a classic vehicle, craft stall, Tombola and fun.

Start growing those vegetables, flowers, taking those photos, and planning those cakes, as this year is going to be great!

### **Tollerton Annual Litter Pick**

A HUGE thank you to all the volunteers who turned out for the annual community litter pick in Tollerton on Saturday, 24<sup>th</sup> March. 28 bags of rubbish were filled, mostly from the extremes of the village, in ditches and hedge bottoms. Also a big thank you to Rob for offering his pick-up to collect all the bags and take them to Tholthorpe household waste recycling centre.

### **St Michael's Church Tollerton - Find us on Facebook**

St Michael's Church Tollerton now has its own Facebook page – follow us at 'St Michael's Church, Tollerton' for up-to-date information on GodZone, what type of service we are having, and other interesting bits of information about who we are and what we are up to.



**DO YOU HAVE A ROAD BIKE?  
AND NEED TO START USING IT?**

**9.00a.m. Saturday 12<sup>th</sup> May**

**(Another) Tollerton C.C.**

**Cycle Ride**

**First ride 11 miles easy**

**Extended Route for Faster Cyclists**

**Meet at Tollerton Village Green**

**8.55 For 9.00a.m departure**

**On return bacon butties at**

**Sycamore House, Newton Road, Tollerton**

## **ALDWARK AREA ANNUAL PARISH ASSEMBLY**

**Tuesday 8<sup>th</sup> May at 7.00p.m.**

The annual parish assembly will be held at Aldwark Manor Hotel, Aldwark, on Tuesday, 8<sup>th</sup> May 2018 at 7.00p.m. This is the annual meeting for the residents of Aldwark, Youlton & Flawith and is an opportunity to raise matters of interest or concern in the parish. It is not a formal parish council meeting.

Everyone is welcome.

## **Charity Golf Day**

on behalf of St Stephen's Church, Aldwark

at Aldwark Manor Golf Club  
Wednesday, 18<sup>th</sup> July 2018

Team Stableford  
Teams of 4,  
Best 2 scores to count on each hole  
All scores to count on the 18<sup>th</sup>

Free half-way house with homemade cakes

Now in its 11<sup>th</sup> year, this is an enjoyable and popular event.

To enter or for further details contact Bill Ormerod  
01347 838357  
[helenandbill.ormerod@gmail.com](mailto:helenandbill.ormerod@gmail.com)

### **Easingwold Area Foodbank**

If you have no income, please don't go hungry - we are here to help!

Call our 24/7 Message Line (all calls strictly confidential) 0772 44 44  
750

We always call you back and deliver food support to your door.  
(Supported by Tollerton Church)

## Church Warden Contact Details:

### St Mary's Alne

Peter Cove 01347 838346 e-mail: [alnescove@btopenworld.com](mailto:alnescove@btopenworld.com)

Carol Glen 01347 838016

### St. Stephen's Aldwark

Vivienne Bird e-mail: [viviennebird@hotmail.co.uk](mailto:viviennebird@hotmail.co.uk)

### St. Michael's Tollerton

Arthur Harland 01347 823575

e-mail: [janeatwoodyedge@yahoo.co.uk](mailto:janeatwoodyedge@yahoo.co.uk)

Alison Dowson 01347 838138 e-mail [amcd2350@gmail.com](mailto:amcd2350@gmail.com)

## METHODIST SERVICES – MAY 2018

The Rev Elizabeth Cushion is the Methodist Minister for the villages around Easingwold. Elizabeth can be contacted on 01347 821460. You are welcome at all of the village services listed below.

Date	Time	Venue	Service Details
6 <sup>th</sup> May	10.30a.m.	Brafferton	United Service
	3.00p.m.	Tholthorpe	K Albans HC
13 <sup>th</sup> May	10.30a.m.	Brafferton	United Service
	3.00p.m.	Alne	Rev E Cushion
20 <sup>th</sup> May	10.30a.m.	Brafferton	V Paylor
	3.00p.m.	Tholthorpe	K Gabbatiss
27 <sup>th</sup> May	10.30a.m.	Brafferton	United Service
	10.30a.m.	Alne	United Service

**ANGLICAN SERVICES  
MAY 2018**

May	6 <sup>th</sup> May	13 <sup>th</sup> May	20 <sup>th</sup> May	27 <sup>th</sup> May
<b>Aldwark</b>	9.00 a.m. Holy Communion Rev Carmel Gittens		9:00 a.m. Holy Communion Chris Mitchell	<p>10.00 a.m. York Minster. Carmel's ordination into the Priesthood</p> <p>6.00 p.m. Joint Service Holy Communion At Tollerton <b>Rev Carmel Gittens</b></p>
<b>Ale</b>	10.30 a.m. Holy Communion Canon Chris Hawthorn	10.30 a.m. Holy Communion Rev C Mitchell	10.30 a.m. Holy Communion Rev Rob Law	
<b>Tollerton</b>	10.30 a.m. Morning Worship Rev Rob Law	10.30 a.m. Morning Worship Alison Dowson	10.30 a.m. Holy Communion Rev C Gittens	
<b>Brafferton</b>	10.30 a.m. Baptism Rev C Gittens	6.30 p.m. Compline Carmel Gittens	10.30 a.m. Methodist Service V Paylor	
<b>Myton</b>		10.30a.m. Holy Communion Carmel Gittens		
<b>Thormanby</b>	10.30 a.m. Morning Prayer Catherine Toase/Charlotte Cranfield			

---

COPY DATE for June 2018 issue: 21<sup>st</sup> May 2018 please.  
e-mail: [news@abchurches.org.uk](mailto:news@abchurches.org.uk)

